

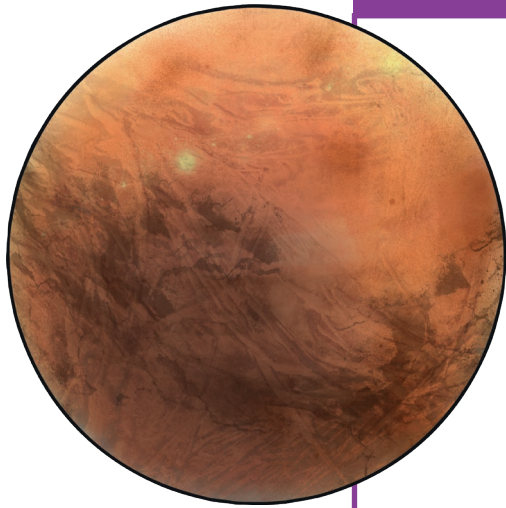
Jazz Harper: Space Explorer

A Space Explorer's Suitcase

In the text 'Jazz Harper: Space Explorer', Jazz and her mum move to the Marineris Colony on Mars. While there are farms and food sources, there are no shops or supermarkets to buy other items from; they must pack everything that they will need for their new life on Mars in a single suitcase.

What would you pack in your suitcase? **Draw and label** what you would pack in your suitcase. Think carefully about essential items as well as luxury items. You could use these Mars facts to help you.

Mars Key Facts



- Mars is a rocky planet.
- Mars is considered to be like a desert and water mainly exists as icy dirt or in thin clouds.
- Days are 24 hours and 37 minutes long.
- Each year is 687 Earth days long.
- Mars, much like Earth, has seasons.
- The planet's average temperature is -63°C .
- The air on Mars is not breathable and you cannot go outside often.

Can you explain why you have chosen some of your items? _____

